



G

green
elegance

*Where Greenery & Luxury
is not an afterthought*



We Build Relationship
We Build Environment

Green Elegance brings you spaciouly designed 3BHK, 4BHK & Duplex elegant apartments in multiple planning options. Offering a good quality infrastructure with modern amenities at an affordable price is what we strive to achieve.

Home at Green Elegance offers a good lifestyle, with recreational facilities, good finish and well thought of planning, but at a very attractive price. It is located in the well developed residential locality of Siliguri, nearby NH 10 and all other urban utilities like Schools, Colleges, Hospitals, Malls, Multiplexes, Retails etc.

A well experienced, and committed & dedicated team of real estate developers ensure that your home has a superior finish, reputed quality fittings & fixtures and timely completion as well.

Green Elegance shall bring a truly elite lifestyle for you and your family today, tomorrow & forever!



LIVE
THOSE
DREAMS



A Life Of LUXURY



green
elegance

LOOK UP TO AN UPBEAT EXUBERANCE

With such a lively environment and lovely spaces, the sheer abundance at **Green Escape** plays the perfect symphony of serenity and bliss. The cordially crafted state-of-the-art amenities stir your enthusiasm and uplift your exuberance. Spreading joy and sharing smiles would become a daily practice at Venkatesh Skydale.





BREATHE IN POSITIVE VIBES, DAY IN & DAY OUT

At **Green Elegance**, preserving your health and wellness has been our topmost priority. The mindful spaces exude peace of mind like never before and fill you with rejuvenating energy that keeps you charged and pumped up.





DISCOVER THE GREEN LIVING

At Green Elegance, lifestyle that involves making choices to reduce your impact on the environment. It's a way to live in balance with nature, conserving resources and promoting ecological harmony.



RAINWATER HARVESTING SYSTEM

It saves more natural water for future use and vastly improves water sustainability.



SOLAR PHOTOVOLTAIC SYSTEM

The system makes use of solar energy, thereby reducing electricity bills.



GREY WATER TREATMENT

Used water is treated and safely reused, thus reducing the use of new water.



HEALTH-SAFE PAINTS AND ADHESIVES

Low Volatile Organic Compound (VOC) paints, adhesives and sealants for interior fixtures ensure your health and safety.



WATER EFFICIENT FIXTURES

This simple addition ensures that water consumption is optimised and water bills are reduced.



RECYCLED CONSTRUCTION MATERIALS

Recycled and locally produced materials have been used, thus reducing carbon dioxide emissions.



SMART LIGHTING

CFLs and LEDs are used in external and common lighting areas to promote low electricity consumption.



WASTE SEGREGATION SYSTEM

Wet and dry waste management ensures that waste is handled in an eco-friendly manner.





DISCOVER THE GREEN LIVING

At Green Elegance, preserving your health and wellness has been our topmost priority. The mindful spaces exude peace of mind like never before and fill you with rejuvenating energy that keeps you charged and pumped up.

COMMON AMENITIES



Jogging Track/Walkway



Yoga & Meditation Area



Cafeteria & Library



Party Lawns



Multipurpose Play Court
(Volley Ball, Outdoor Badminton, Mini Football, Cricket)



Children's Play Area
(Rubber Flooring)



Gym with Spa
(Separate for Ladies & Gents)



Crèche with Play Area
(Rubber Flooring)



Stage with Background Wall



Swimming pool & kids pool
with Infinity edge



Half Basketball Court with Seating



Seating Area



Jacuzzi



Cabana



Natural Play Area



Senior Citizen Sit-Out



Acupressure Track



Indoor Games



Private Screening Room



Open Air Gym



Guest Room

The Location

One of the most blessed location of Siliguri, Ocean Pearl enjoys proximity to various residential and commercials developments and share a rich living experience.

It is a preferred destination for setting up dream house for many due to excellent connectivity. Retail and Commercial developments, Entertainment Avenues, Shopping Centres, Hospitals, Restaurants, Educational Institutions.




Ocean Pearl has a seductive appeal and glitters of a great place.

Proximity

| | | |
|---|---------------------|--|
|  | SCHOOLS COLLEGES | Don Bosco School Nirmala Convent School Salesian College Auxilium Convent School |
|  | HOSPITALS | Anandaloke Hospital Nayak Hospital Neotia Healthcare Manokamna Hospital |
|  | SHOPPING | Cosmos Mall Vega Circle Mall Reliance Digital ML Acropolis |
|  | HOTELS | Hotel Milestone Hotel Saffron Crest The Cindrella Hotel Hotel Ramada |
|  | IMPORTANT LANDMARKS | Bagdogra Airport NJP Rail Station PCM Bus Terminus |

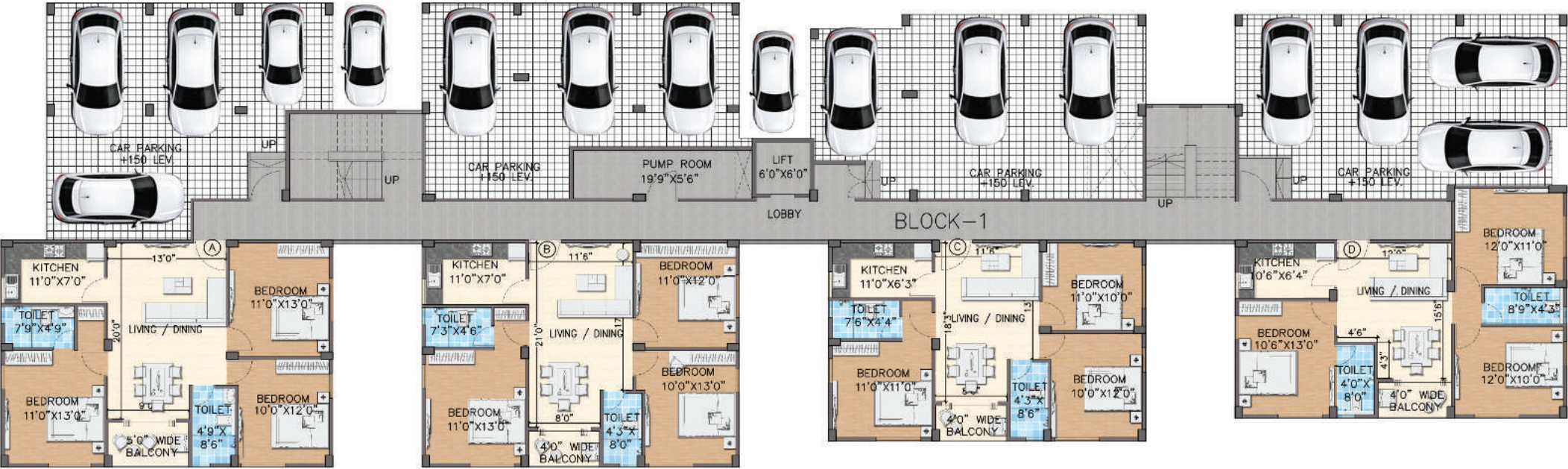
Master Plan



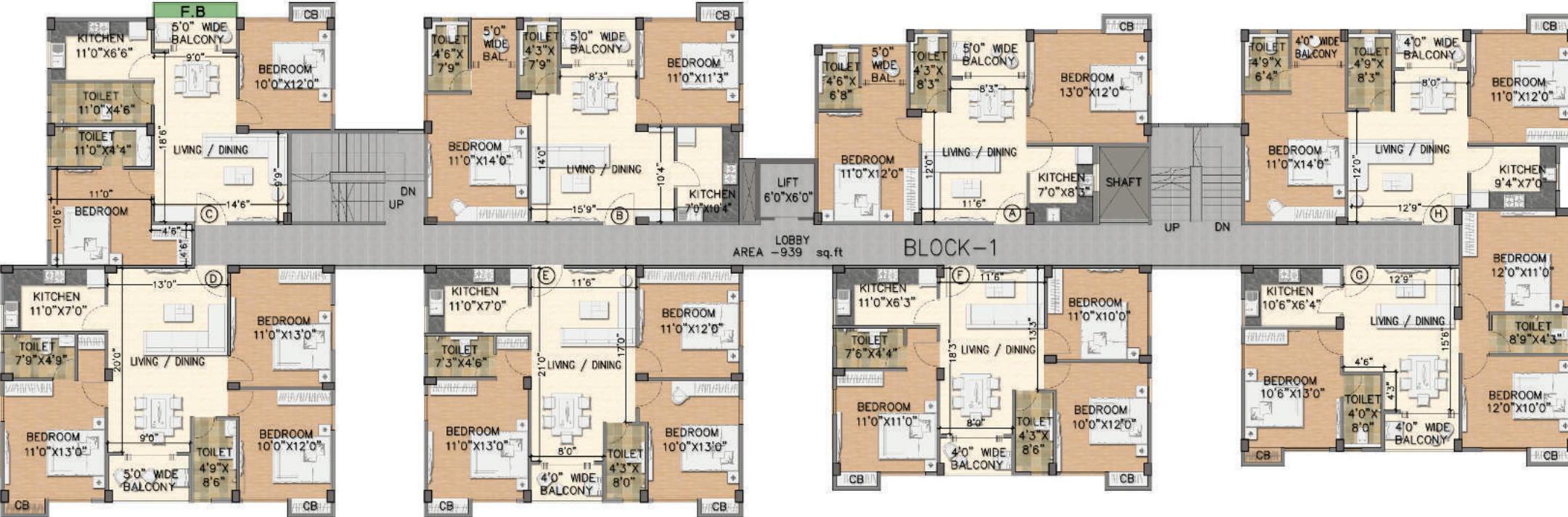
| | TYPE | SIZE | NOS. |
|---|-------|-----------|------------|
|  | CAR-1 | 2500X5000 | 1-46 NOS. |
|  | CAR-2 | 2250X4500 | 47-80 NOS. |
|  | CAR-3 | 2250X4000 | 81-85 NOS. |



Block - 1
Ground Floor Plan



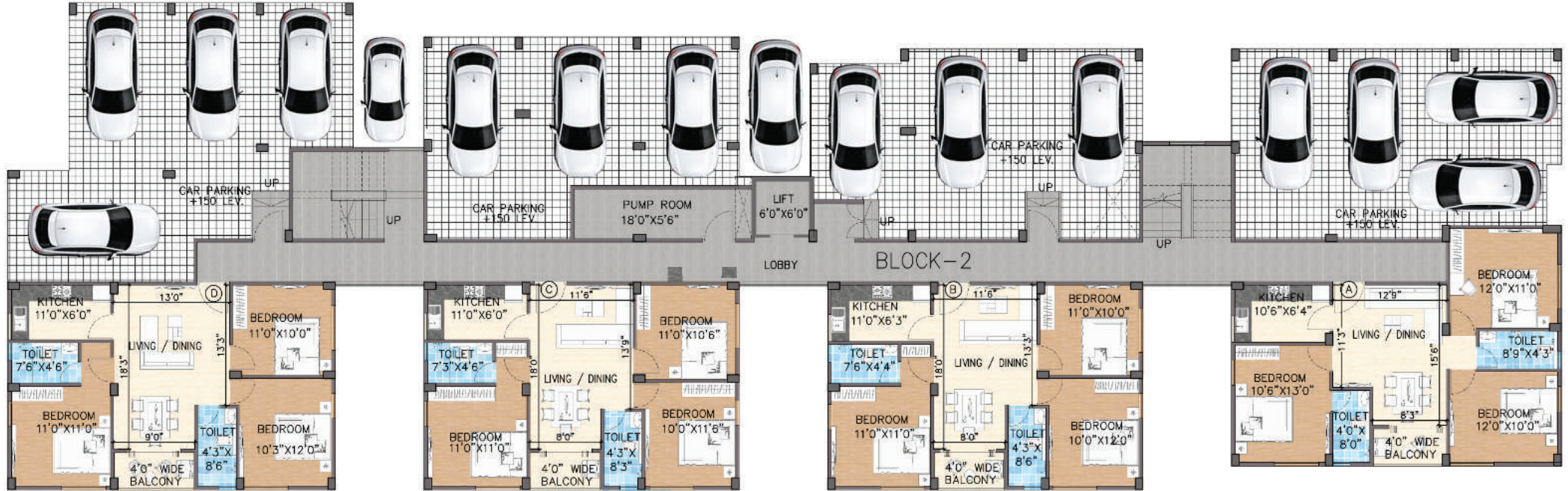
Block - 1
Typical Floor Plan



Block - 1-H
Isometric View - 2BHK



Block - 2
Ground Floor Plan



Block - 2
Typical Floor Plan

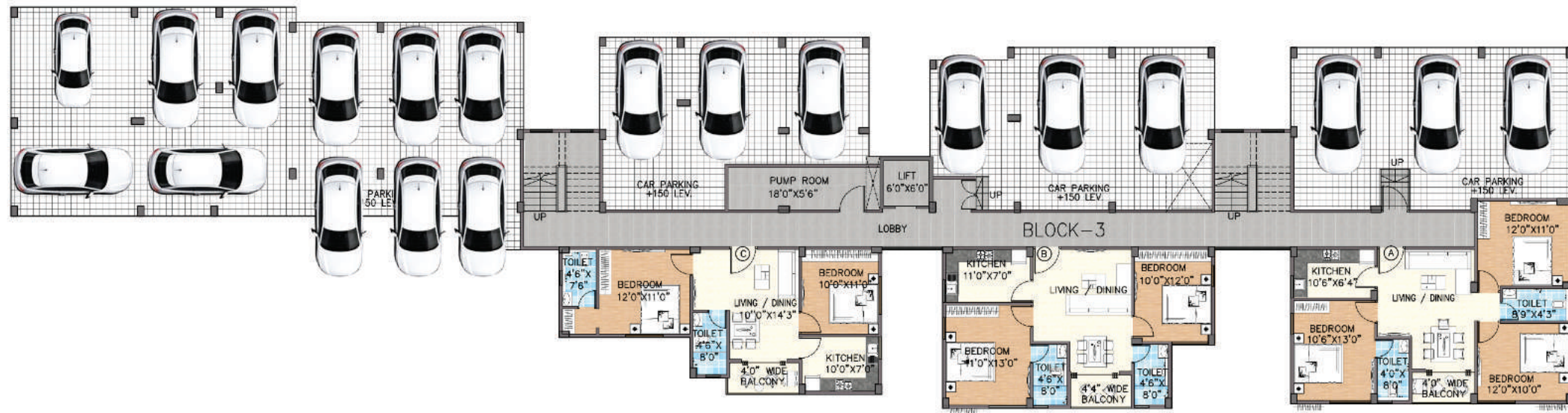


Block - 2-D
Isometric View - 3BHK



Block - 3

Ground Floor Plan



Block - 3

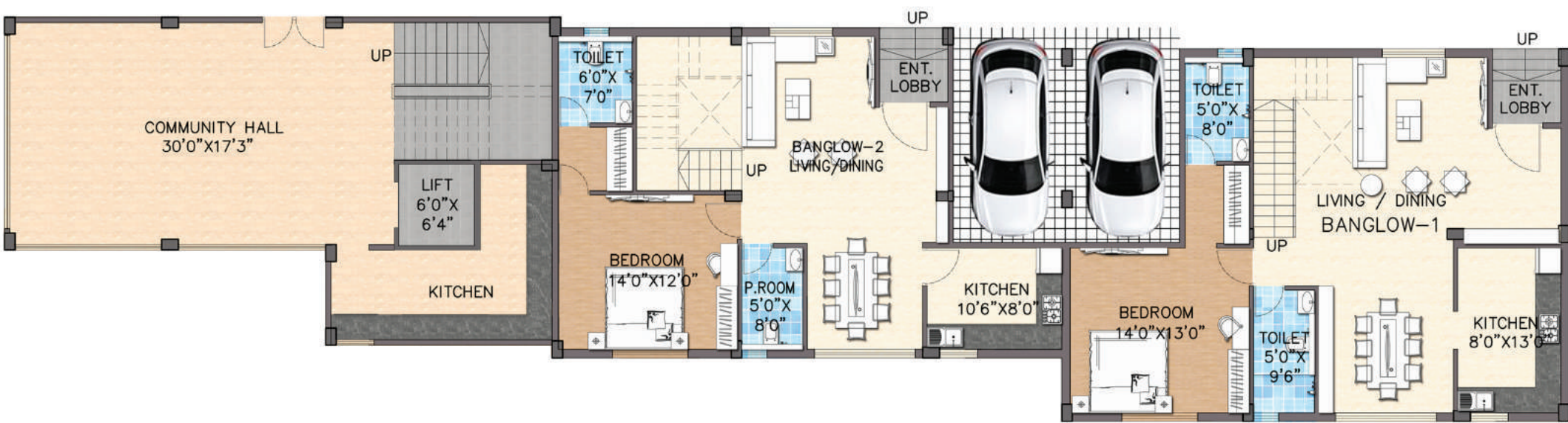
Typical Floor Plan



Block - 3-D
Isometric View - 3BHK

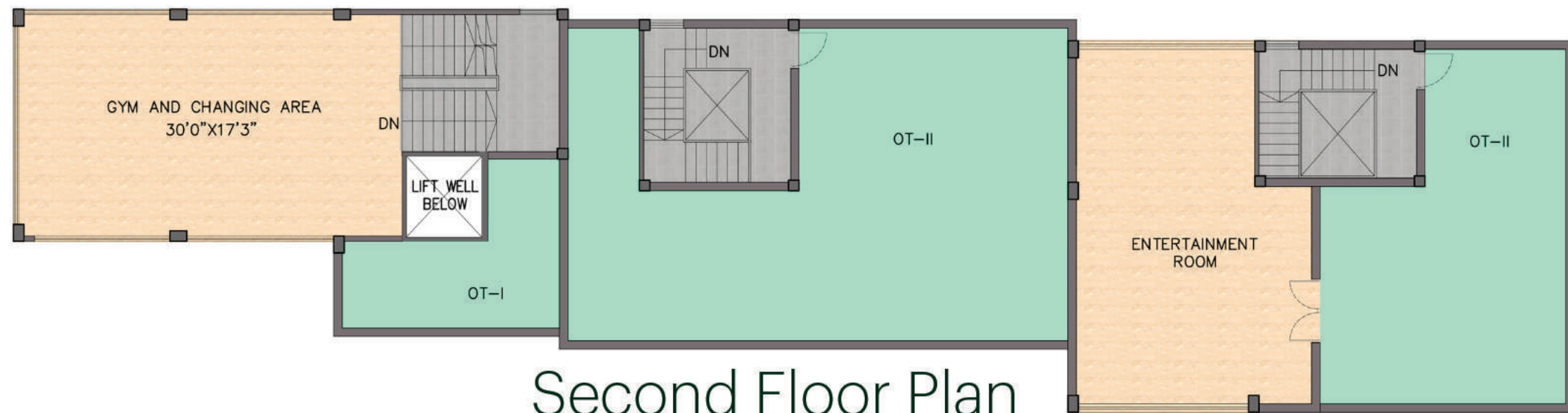


Ground Floor





First Floor Plan



Second Floor Plan

Thank You



Architect

Developer



Site Address

Near Koushal Hyundai
Opp. Jesu Ashram, Matigara, Siliguri

Office Address

T-17, 3rd Floor, Goyal Plaza Building
Opp. of Sachitra Hotel
Sevoke Road, Siliguri – 734001

Contact

Call Us : +91-93393 61344
email :
website :

DISCLAIMER: This document is not a legal offering. It only describes the intent & concept of Green Elegance. All the areas/dimensions/layout/elevations/pictures, etc. are only indicative and not as per scale. All the details are subject to change, alteration and modification as per the developer's discretions.